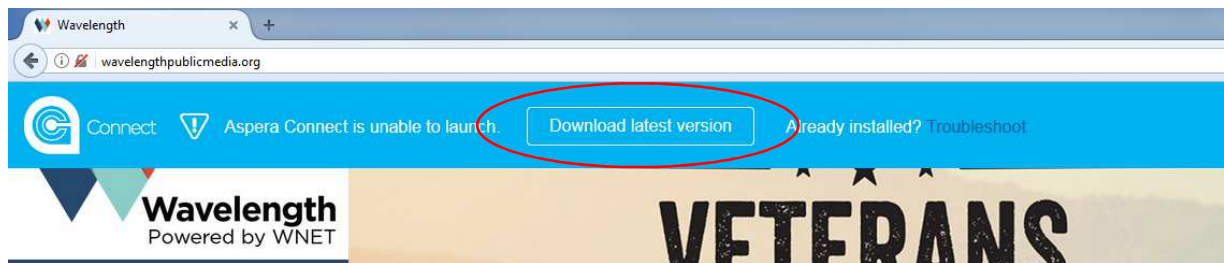


Installing Aspera Connect

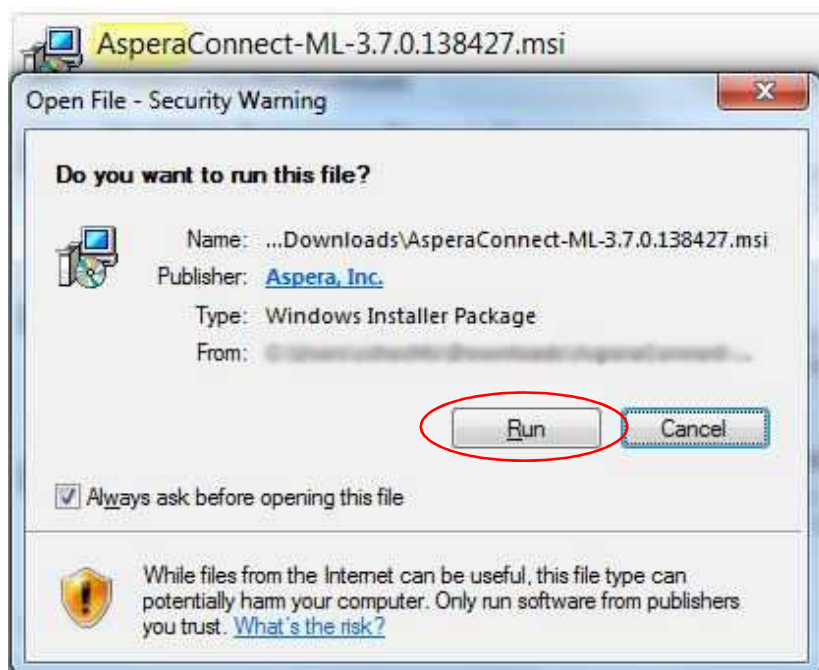
In order to use the Wavelength platform, you will need to install the Aspera Connect plug-in on your computer. If you have installed the Aspera Connect plug-in on your computer in the past, you may need to download and install the latest version to proceed with using Wavelength.

Below is a guide for how to install and activate the Aspera Connect plug-in. As always, if you have further questions, don't hesitate to reach out to the Wavelength Team at ShareContent@wnet.org.

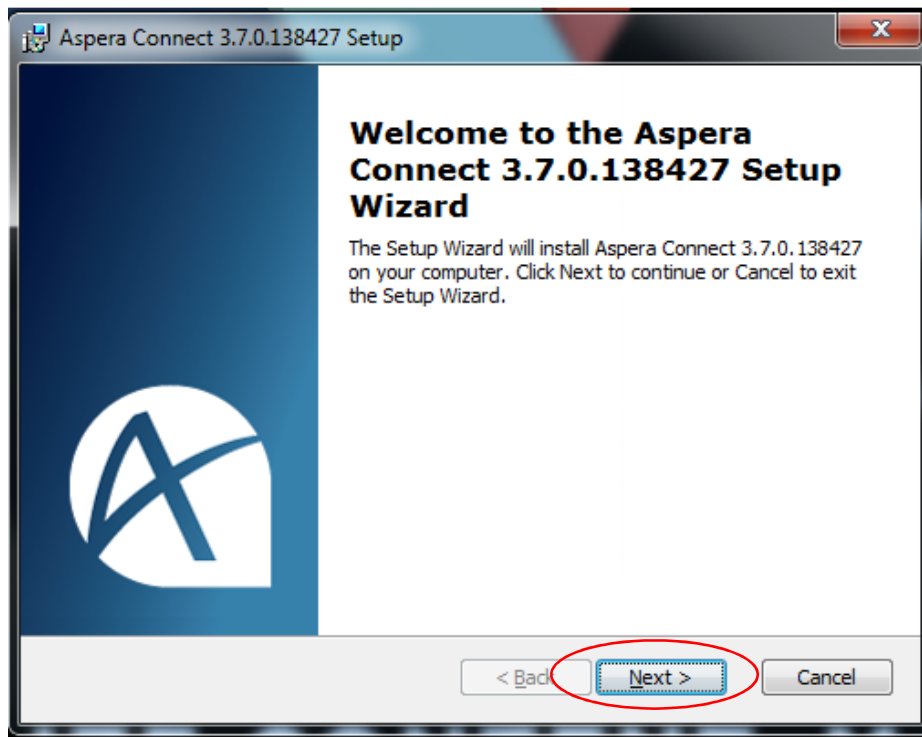
1. When you visit Wavelength (www.WavelengthPublicMedia.org) without an installed Aspera Connect plug-in, you will see a blue banner appear at the top of your screen letting you know that Aspera Connect is unable to launch. Click the "Download latest version" button to download the Aspera Connect plug-in.



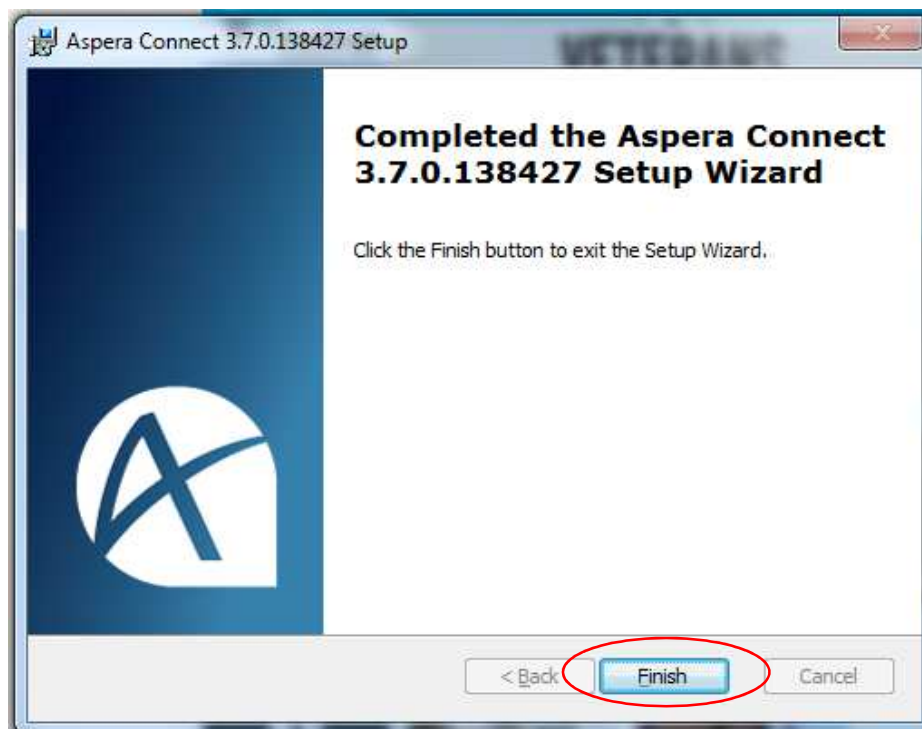
2. Once downloaded, open the plug-in file and click "Run" to begin installation.



3. Follow the instructions on your screen to install the plug-in, noting that you will need to close your browser to complete installation.

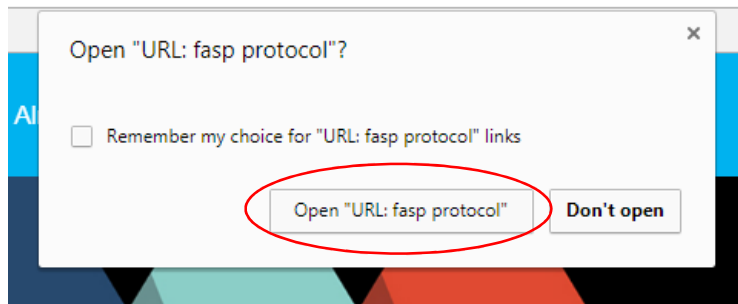


4. When you've completed the Aspera Connect installation process, click "Finish:"

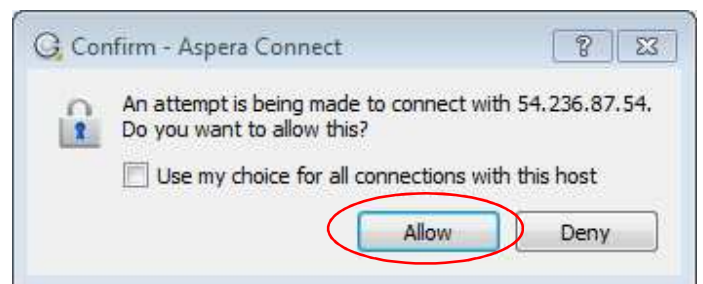
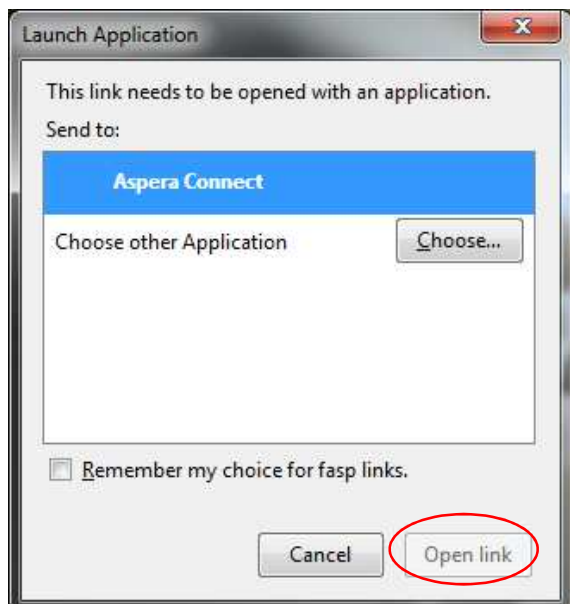


5. Re-open your browser and visit www.WavelengthPublicMedia.org again. Depending on your browser, you will see a pop-up that looks like one of the following:

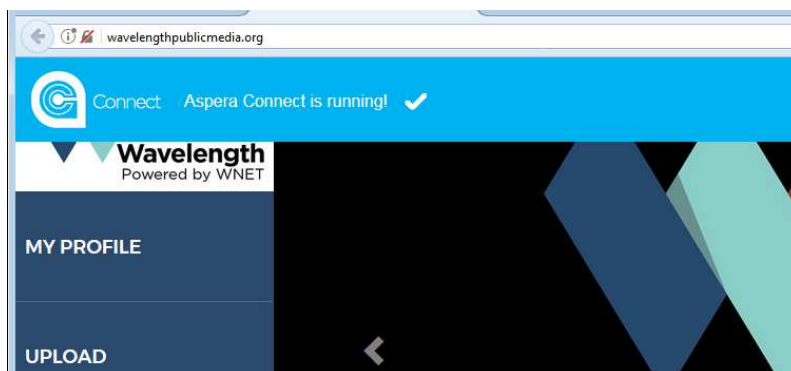
CHROME:



FIREFOX:



In any of these cases, click **Open** or **Allow**. Aspera Connect will then be enabled.



You are now ready to upload and download content on Wavelength! We look forward to sharing with you.